

sodaFlowers User Manual

What is SodaFlowers?

SodaFlowers is a application that allows you to create your own SodaFlowers using any model you have built using Sodaconstructor or SodaLab.

Running SodaFlowers

1. Download the zip file for the SodgraaFlowers application from the SodaFlowers Download page.
2. Extract the contents of the zip file. You may need third party extraction software.
3. If you are running Microsoft Windows double click on the SodaFlowers.bat file.

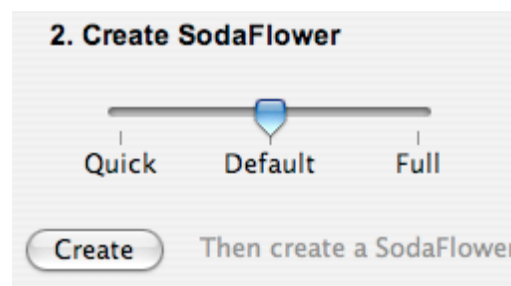
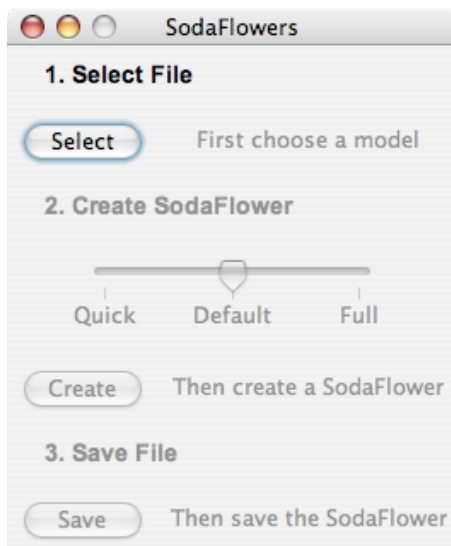
Notes:

Creating SodaFlowers will often take several minutes, even on new machines.

Creating SodaFlowers

Creating SodaFlowers takes three steps:

1. Select the model you want to create a SodaFlower from by clicking on the button labelled "select"



2. Create the SodaFlower by selecting the strength of the procedure. Warning a full run of the proceed will take a very long time.
3. To save the model click on the save button, choose a location and save it.
4. To view the created SodaFlower open Sodaconstructor and open the model that we just saved.